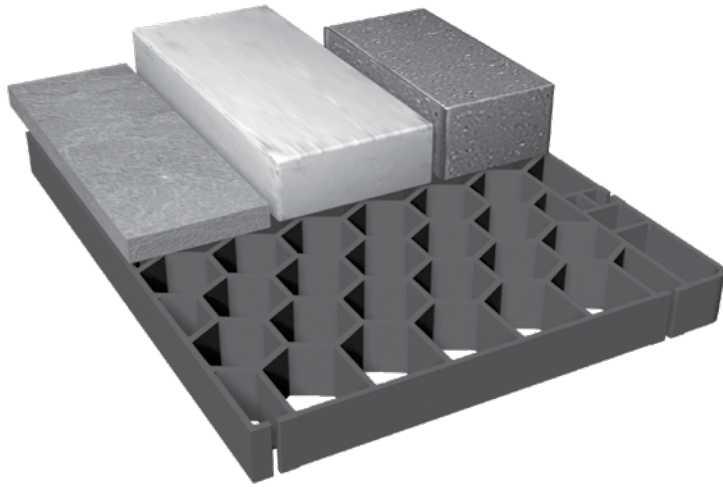


# SILCASYSTEM® INSTALLATION INSTRUCTIONS

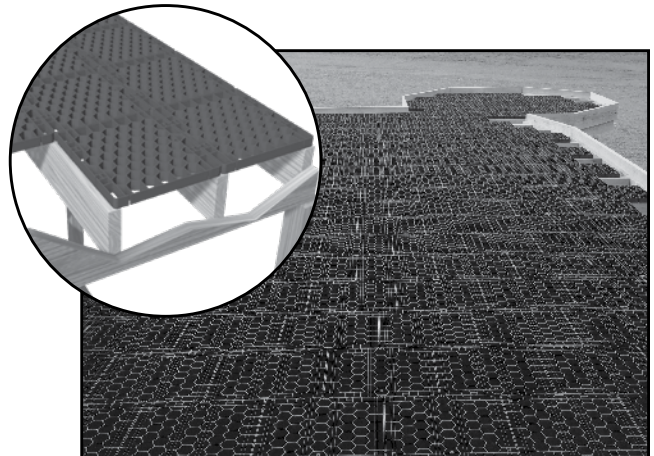
Turn your backyard from drab to fab with SilcaSystem. This revolutionary panel system allows for the creation of ground-level or elevated stone decks on wood or metal joists. Use SilcaSystem with Belgard pavers and slabs or Mirage porcelain pavers to upgrade porches, patios, pool decks and more.



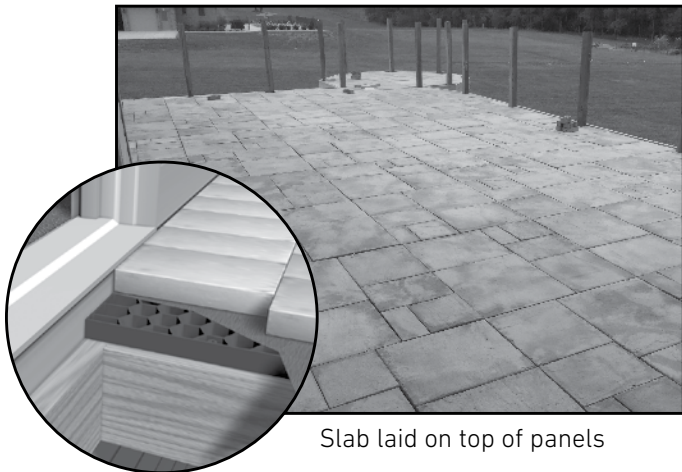
A variety of paver products can be set onto the SilcaSystem panels including: Mirage® porcelain pavers or Belgard® pavers and slabs (as shown below). Recommended product heights of 3/4" - 3".



Exposed joists



Panels secured to top of joists



Slab laid on top of panels



Finished project